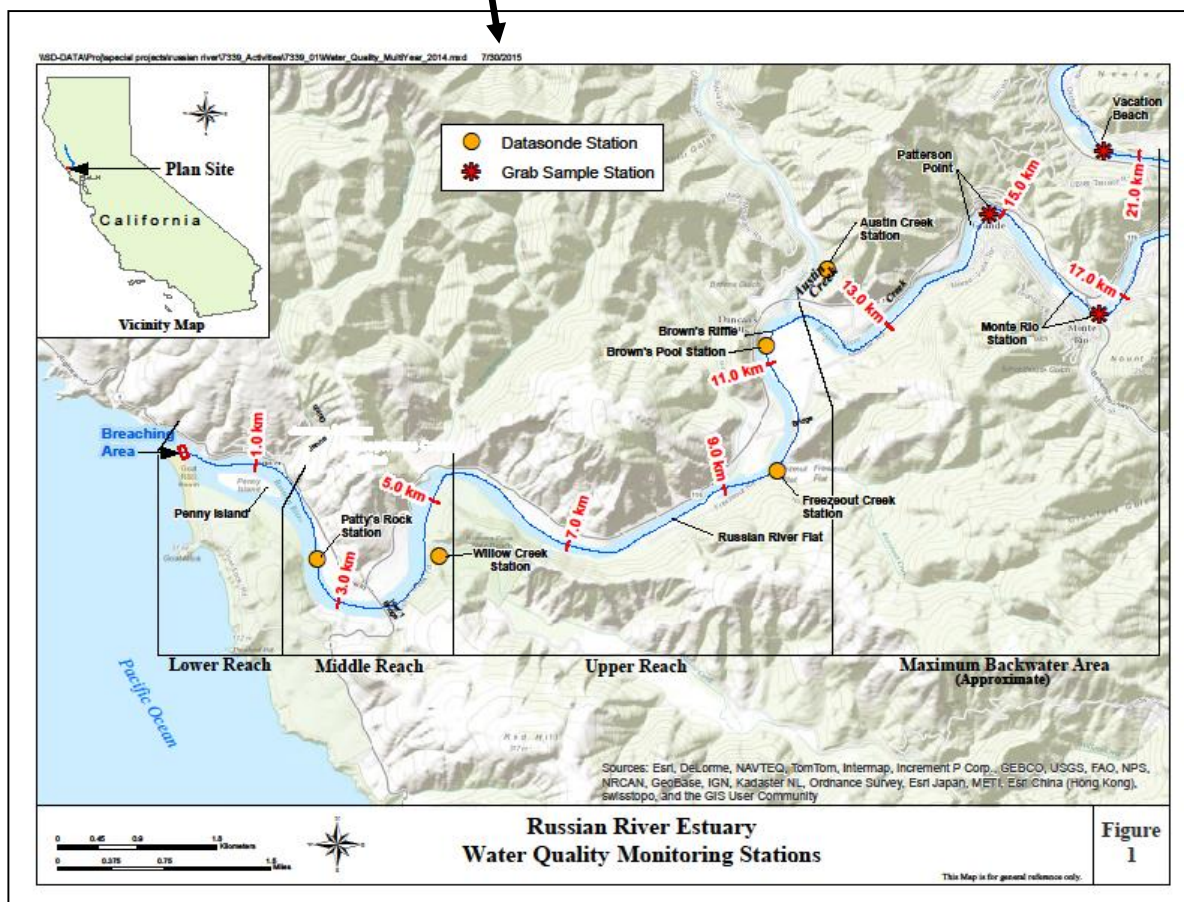
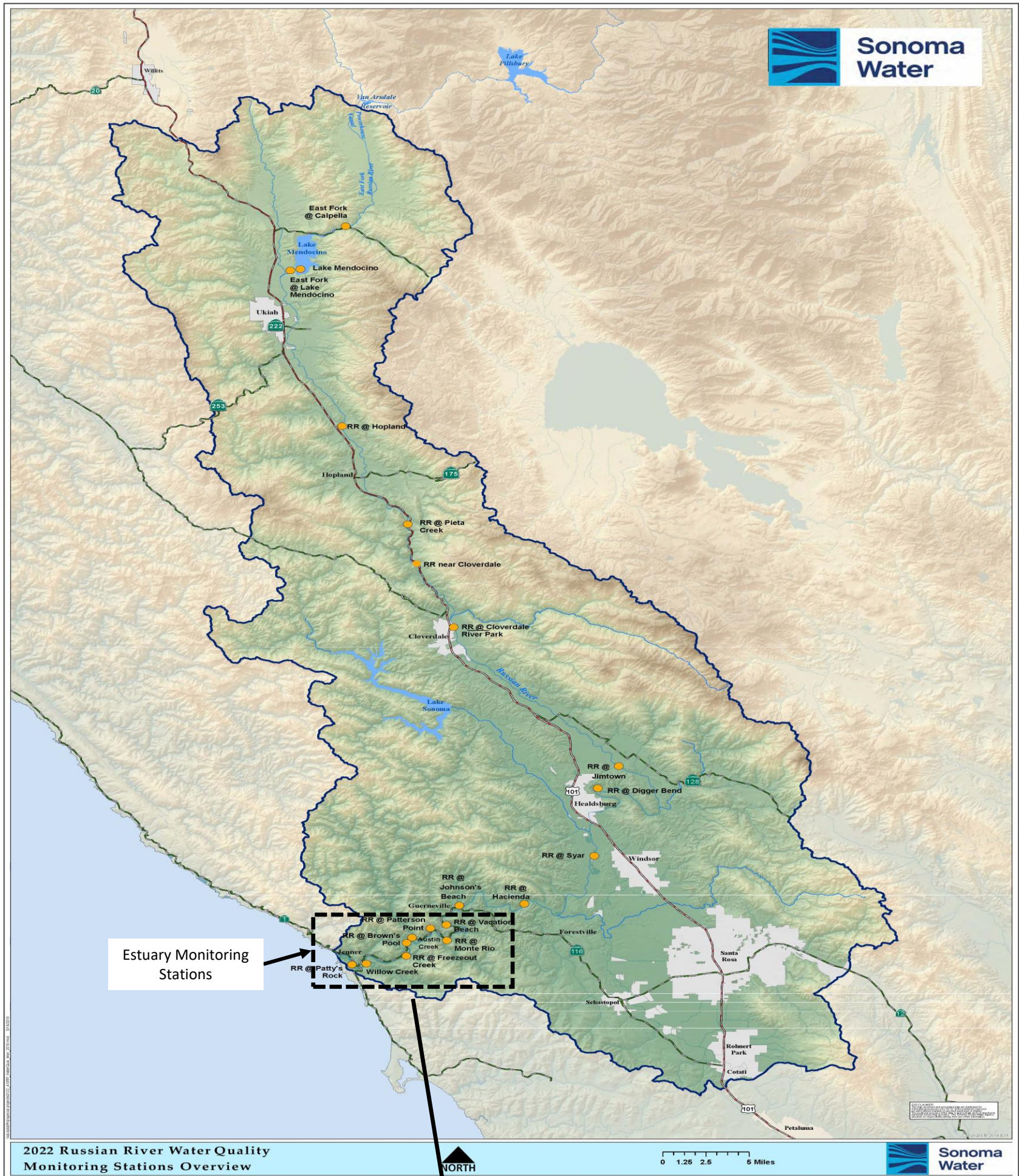




Sonoma Water

State Water Resources Control Board Temporary Urgency Change Order (6/17/2022) Russian River Water Quality Report July 01, 2022 - July 07, 2022



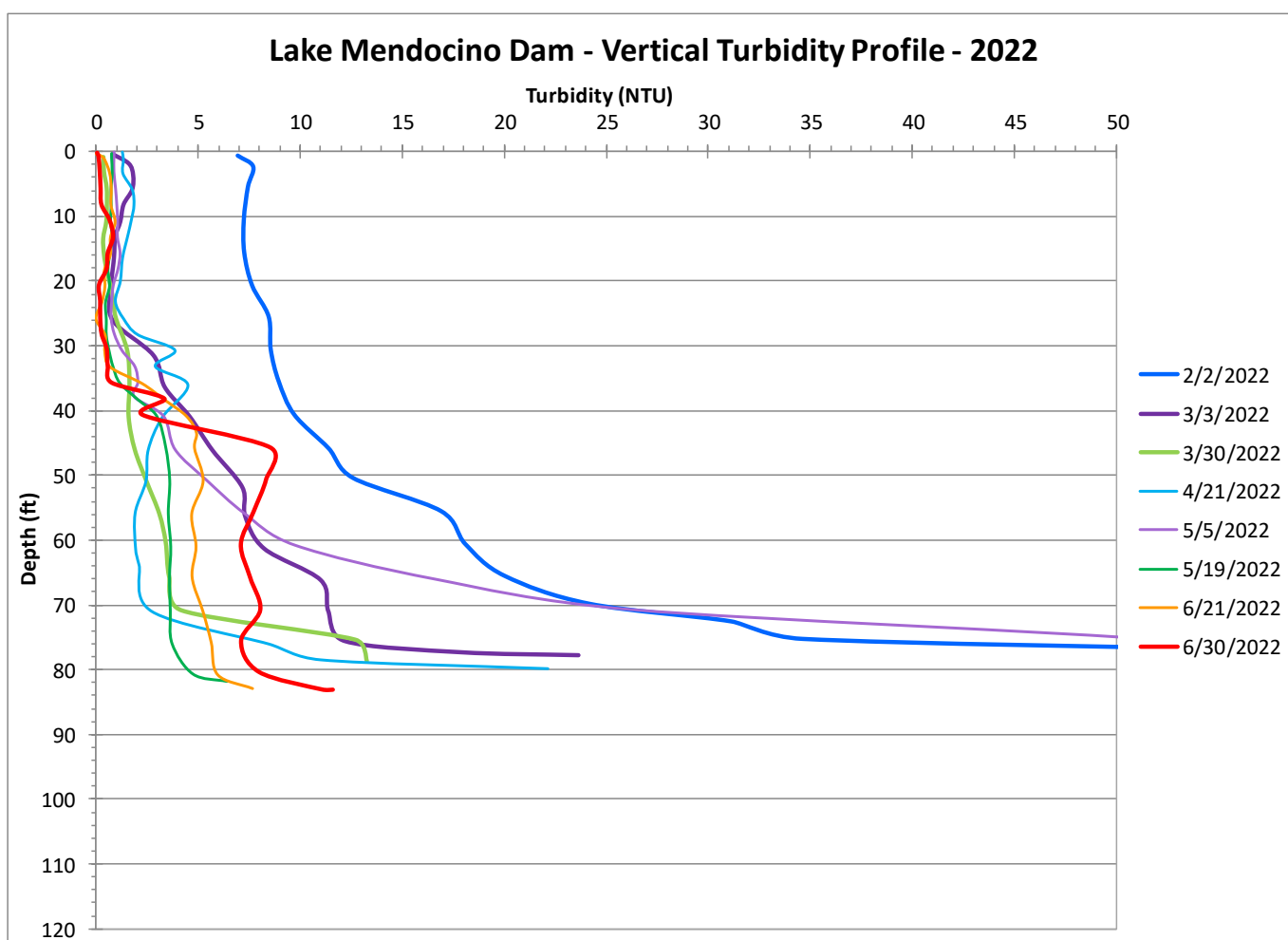
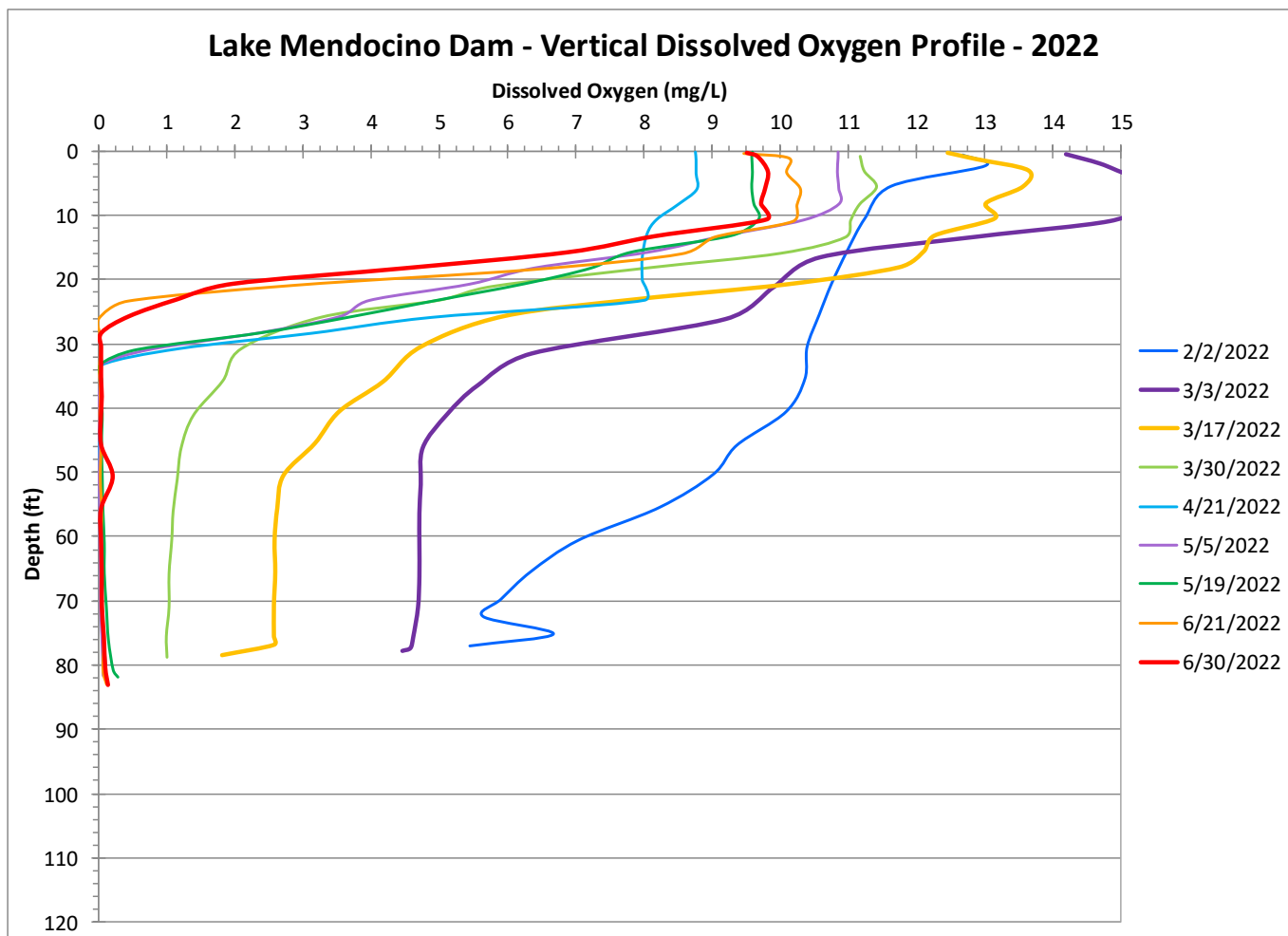
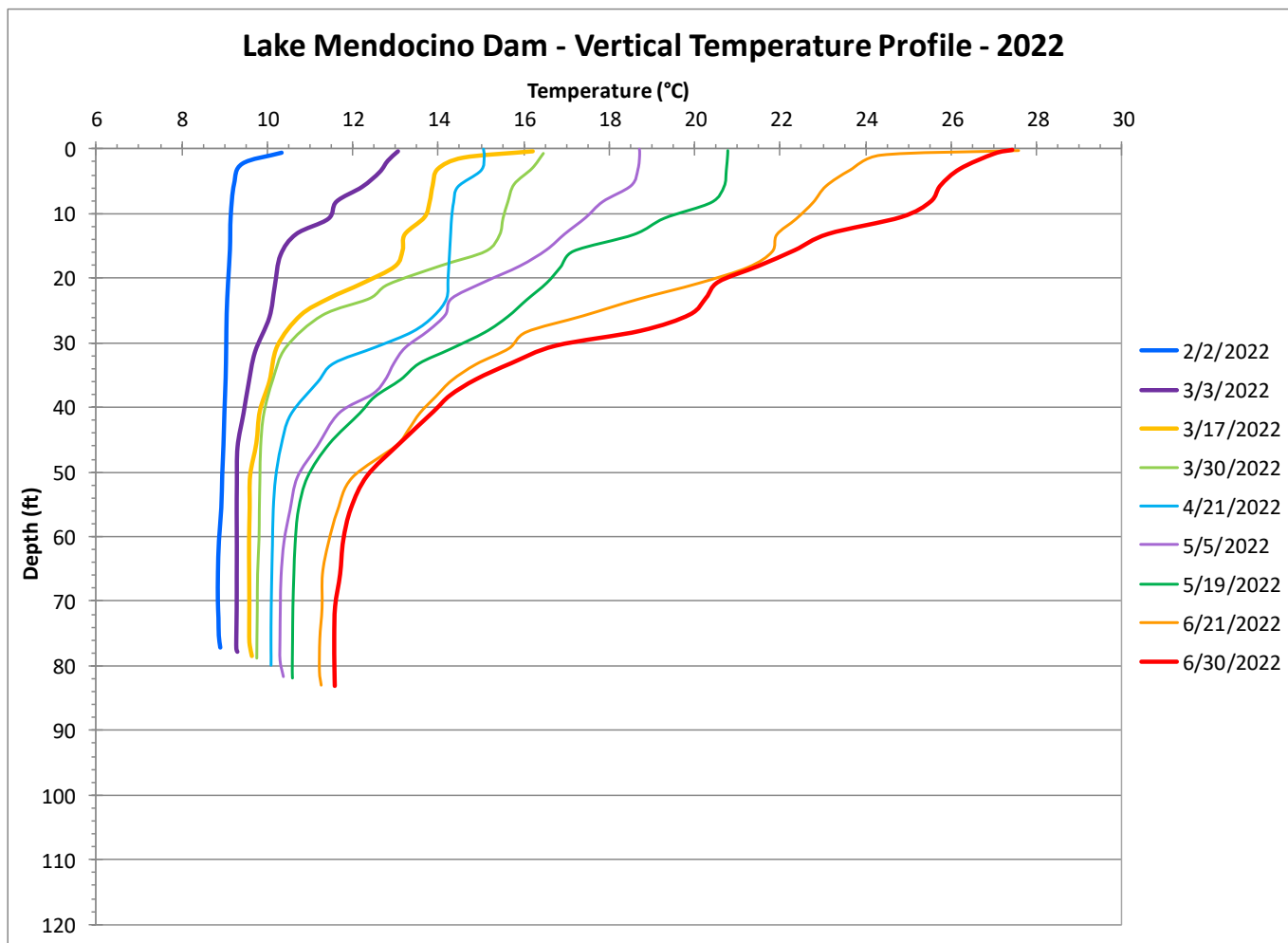
Russian River Estuary
Water Quality Monitoring Stations

Figure 1

This Map is for general reference only.

Lake Mendocino Water Quality Vertical Profiles (February 2 – June 30, 2022)

Provisional Data Subject to Revision

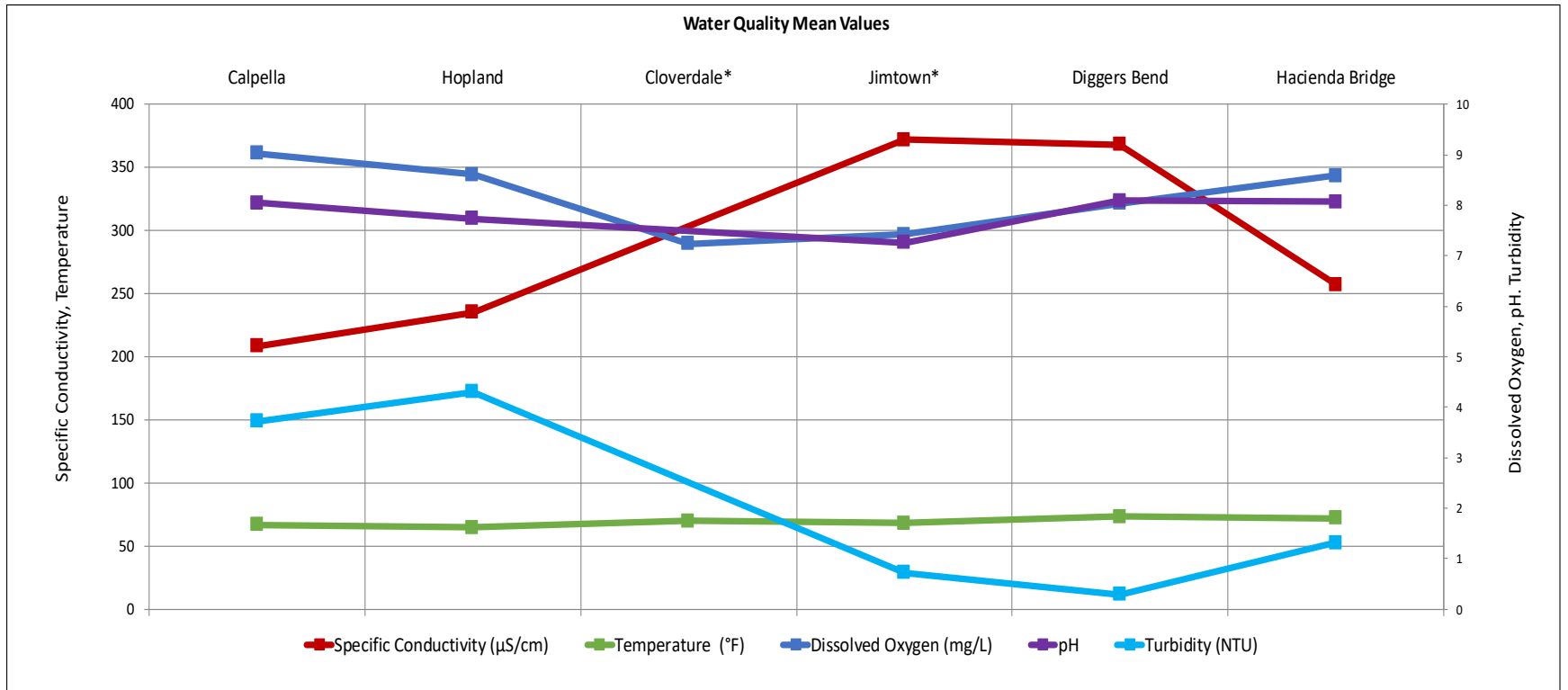


Russian River Water Quality (July 01, 2022 - July 07, 2022)

Provisional Data Subject to Revision

Parameter		Calpella	Hopland	Cloverdale*	Jimtown*	Diggers Bend	River Diversion System at Mirabel*	Hacienda Bridge	Johnsons Beach*
		USGS 11461500	USGS 11462500	USGS 11463000	USGS 11463682	USGS 11463980	SCWA	USGS 11467000	SCWA
Temperature (°F)	Min	64.6	61.7	66.9	64.8	69.8		70.2	
	Max	70.9	68.9	74.8	73.6	78.3		74.7	
	Mean	66.9	64.8	69.9	68.4	73.5		72.1	
Specific Conductivity (µS/cm)	Min	204.0	232.0		363.0	365.0		252.0	
	Max	212.0	238.0		377.0	371.0		269.0	
	Mean	208.3	235.3		372.2	368.0		257.4	
Dissolved Oxygen (mg/L)	Min	8.3	7.2	4.2	5.0	6.2		7.9	
	Max	10.3	10.0	10.8	10.6	10.0		9.7	
	Mean	9.0	8.6	7.2	7.4	8.0		8.6	
Dissolved Oxygen (% Saturation)	Min	90.9	76.3	49.3	53.1	69.9		89.3	
	Max	113.3	108.6	125.6	123.8	122.2		114.5	
	Mean	98.1	91.4	81.5	82.4	94.2		98.8	
pH	Min	7.8	7.5		7.1	7.8		7.9	
	Max	8.4	8.0		7.5	8.3		8.3	
	Mean	8.0	7.7		7.3	8.1		8.1	
Turbidity (NTU)	Min	2.4	2.2		0.4	0.0		0.6	
	Max	5.0	8.8		1.2	0.8		2.1	
	Mean	3.7	4.3		0.7	0.3		1.3	

*Station operated seasonally

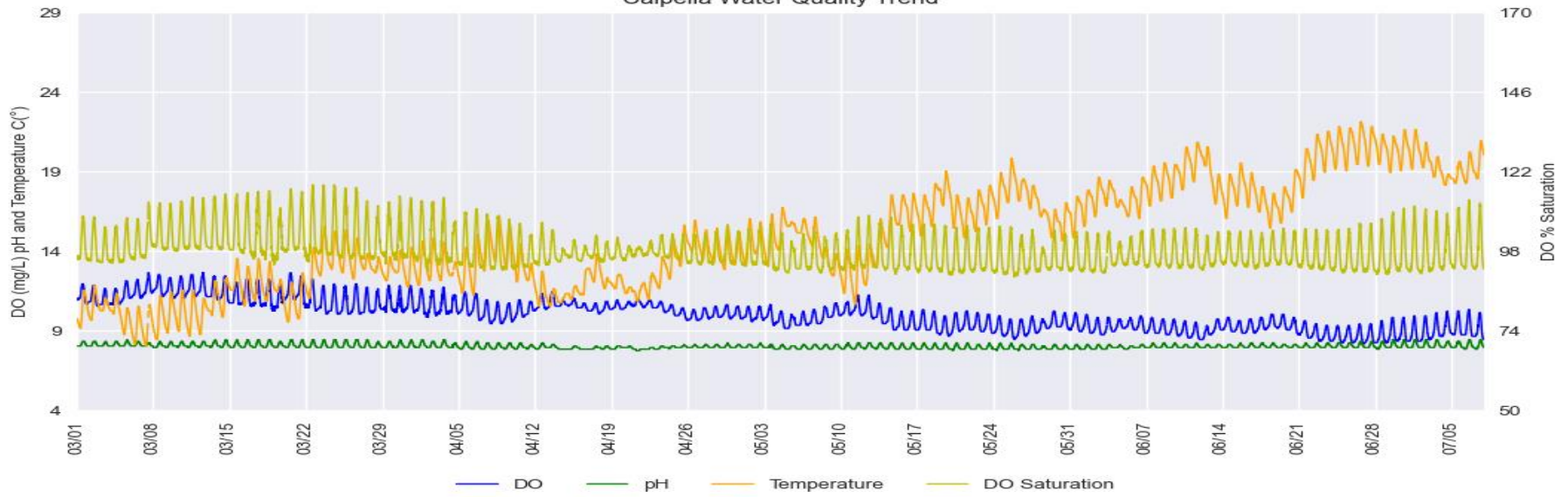


Russian River Water Quality (March 01, 2022 - July 07, 2022)

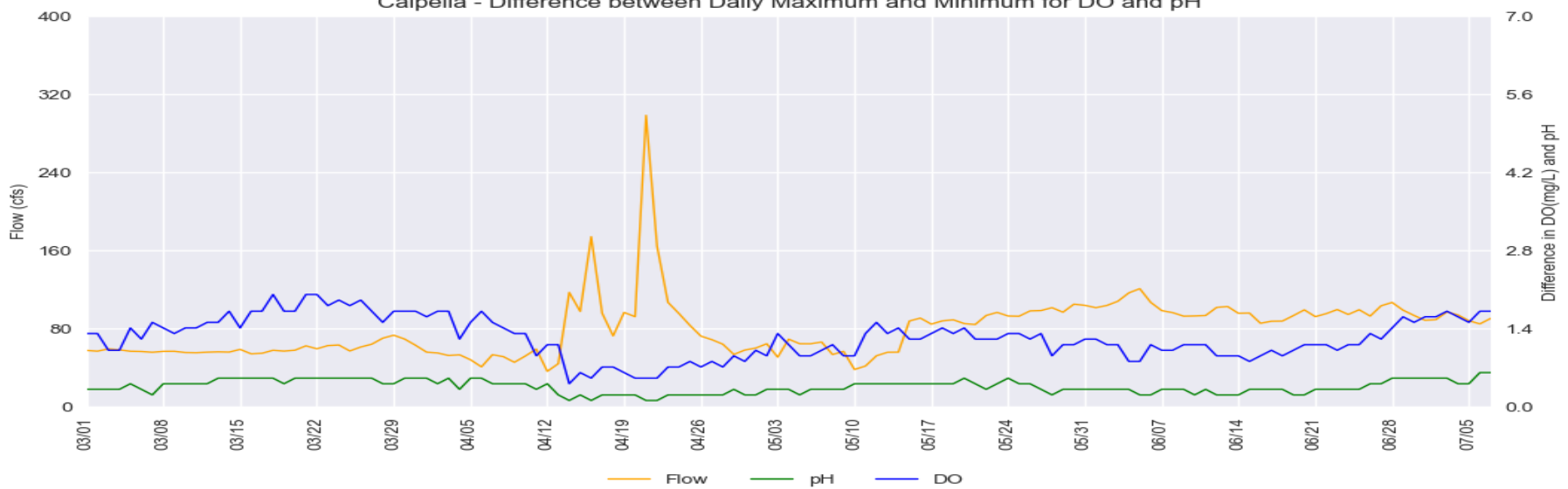
Provisional Data Subject to Revision

Calpella (East Fork Russian River)

Calpella Water Quality Trend



Calpella - Difference between Daily Maximum and Minimum for DO and pH

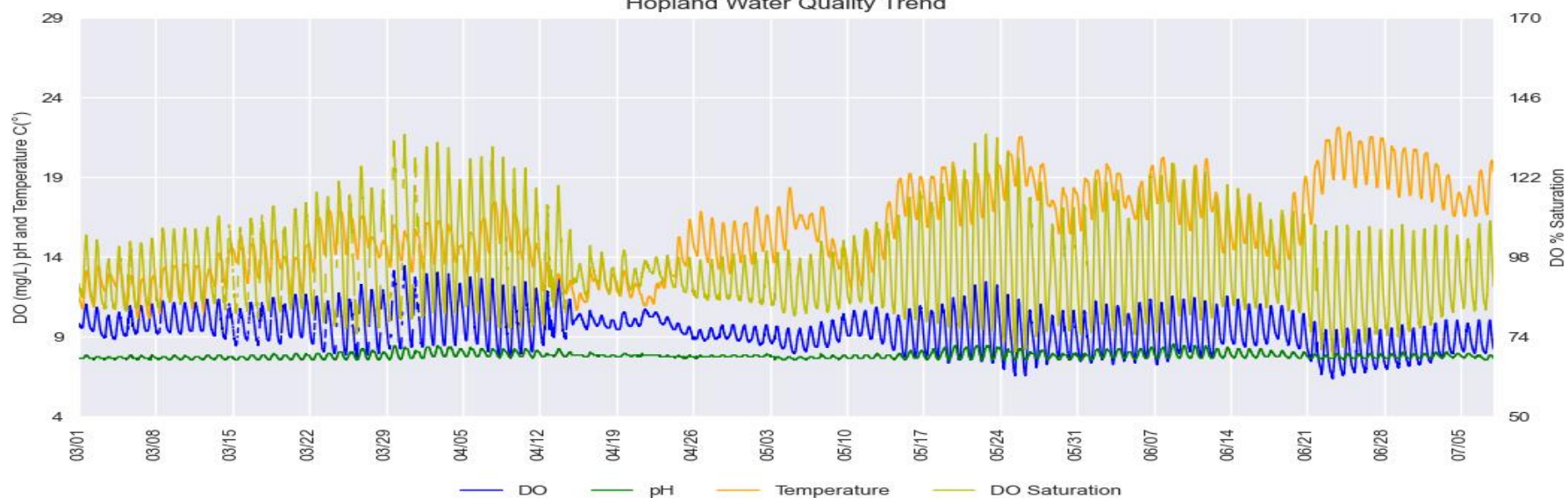


Russian River Water Quality (March 01, 2022 - July 07, 2022)

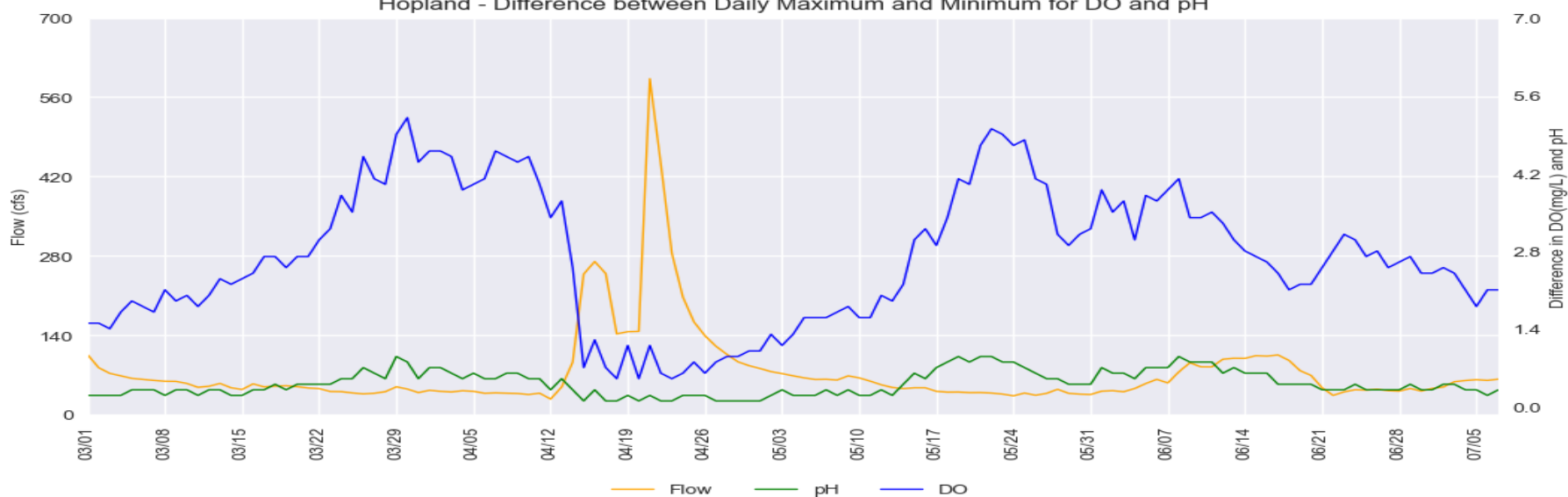
Provisional Data Subject to Revision

Hopland

Hopland Water Quality Trend

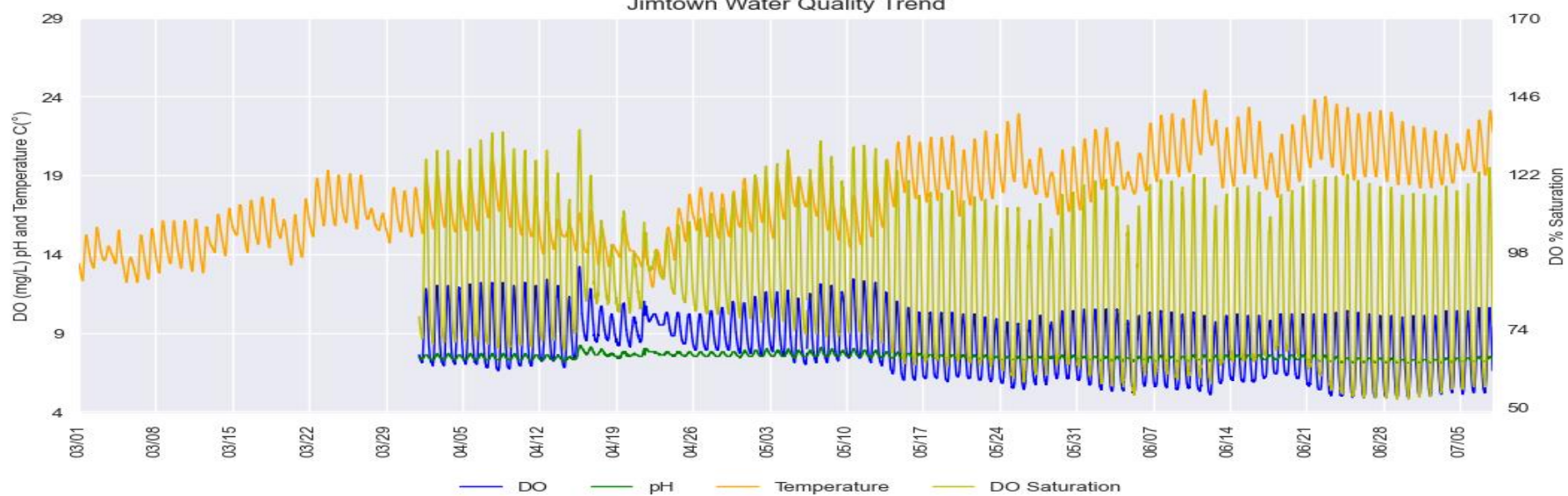


Hopland - Difference between Daily Maximum and Minimum for DO and pH

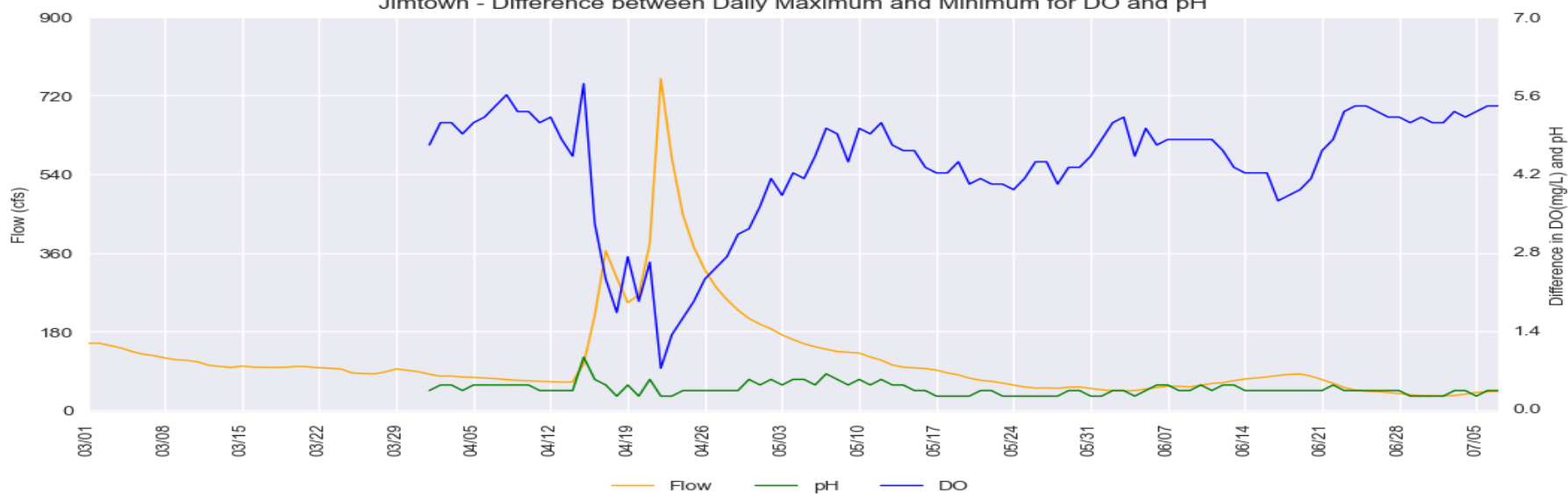


Jimtown

Jimtown Water Quality Trend



Jimtown - Difference between Daily Maximum and Minimum for DO and pH

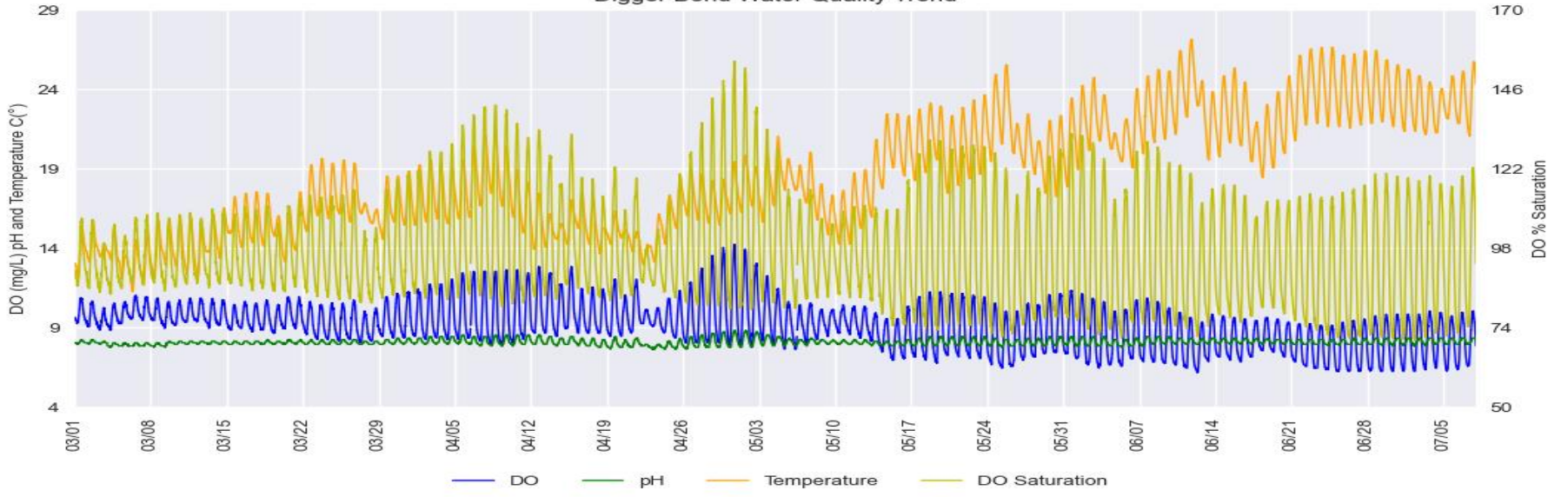


Russian River Water Quality (March 01, 2022 - July 07, 2022)

Provisional Data Subject to Revision

Digger Bend

Digger Bend Water Quality Trend

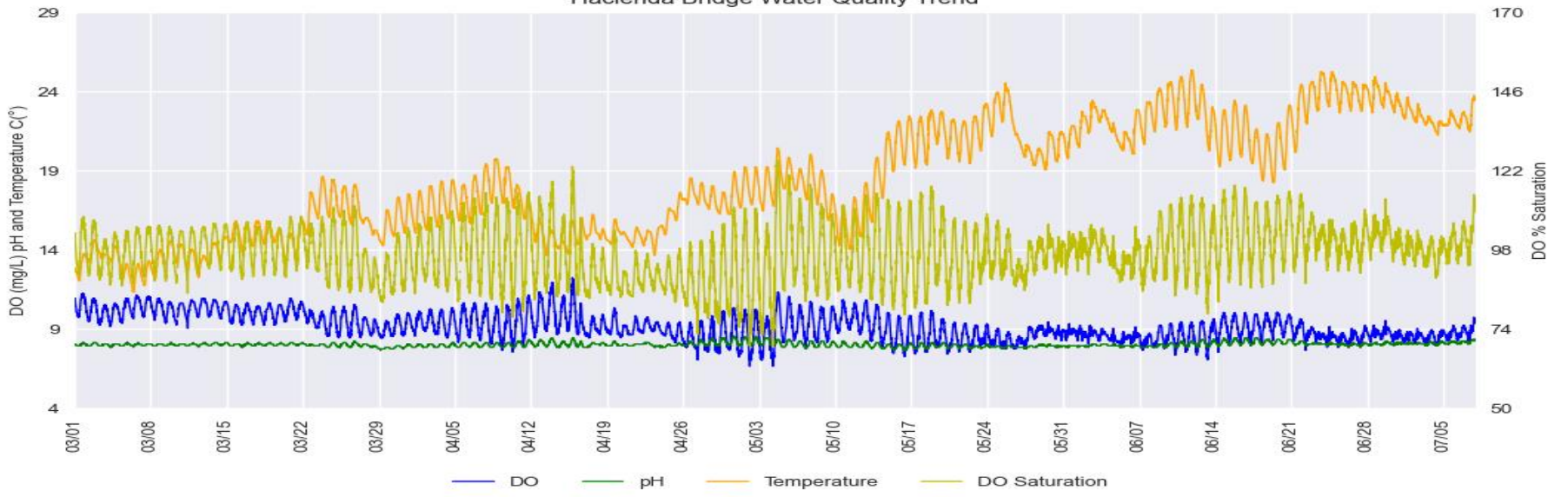


Digger Bend - Difference between Daily Maximum and Minimum for DO and pH

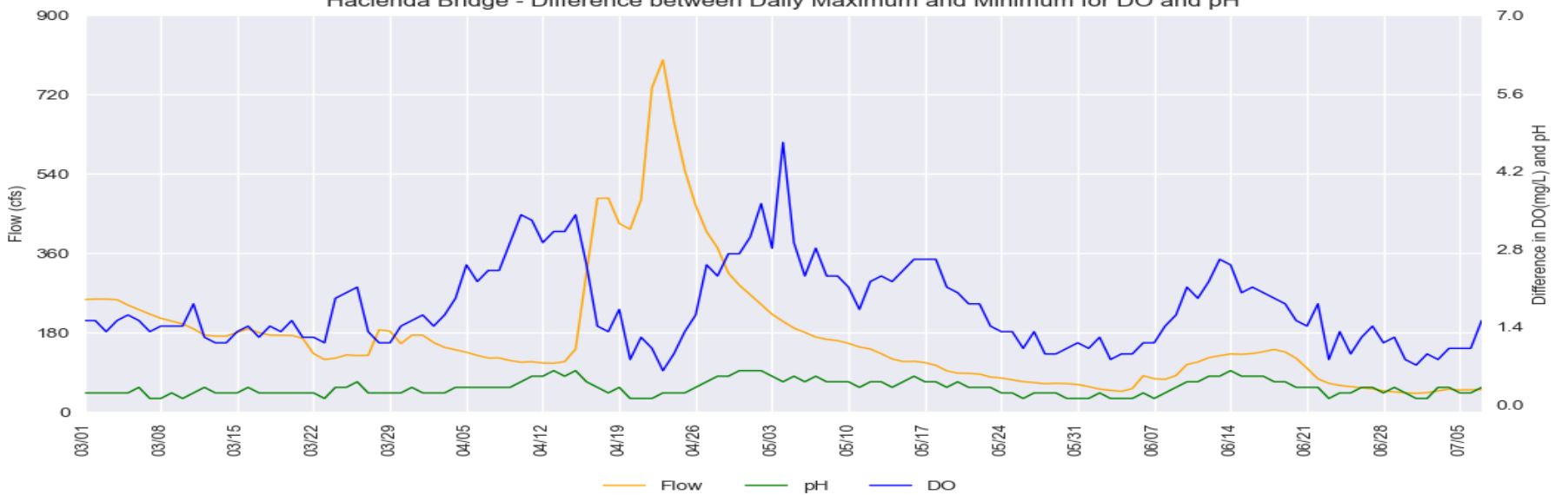


Hacienda Bridge

Hacienda Bridge Water Quality Trend



Hacienda Bridge - Difference between Daily Maximum and Minimum for DO and pH

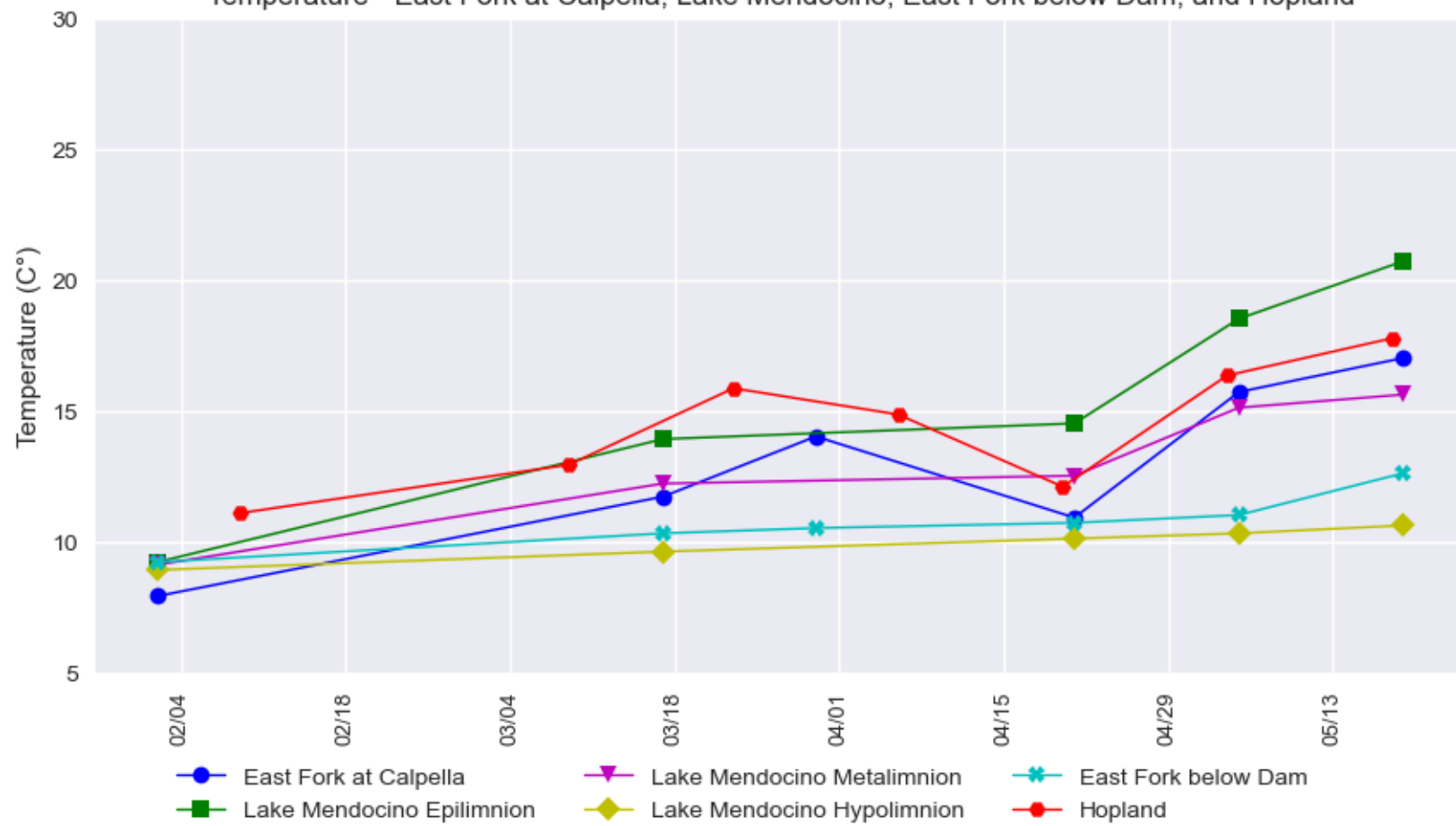


Russian River Water Quality Grab Samples (February 2 - May 19, 2022)

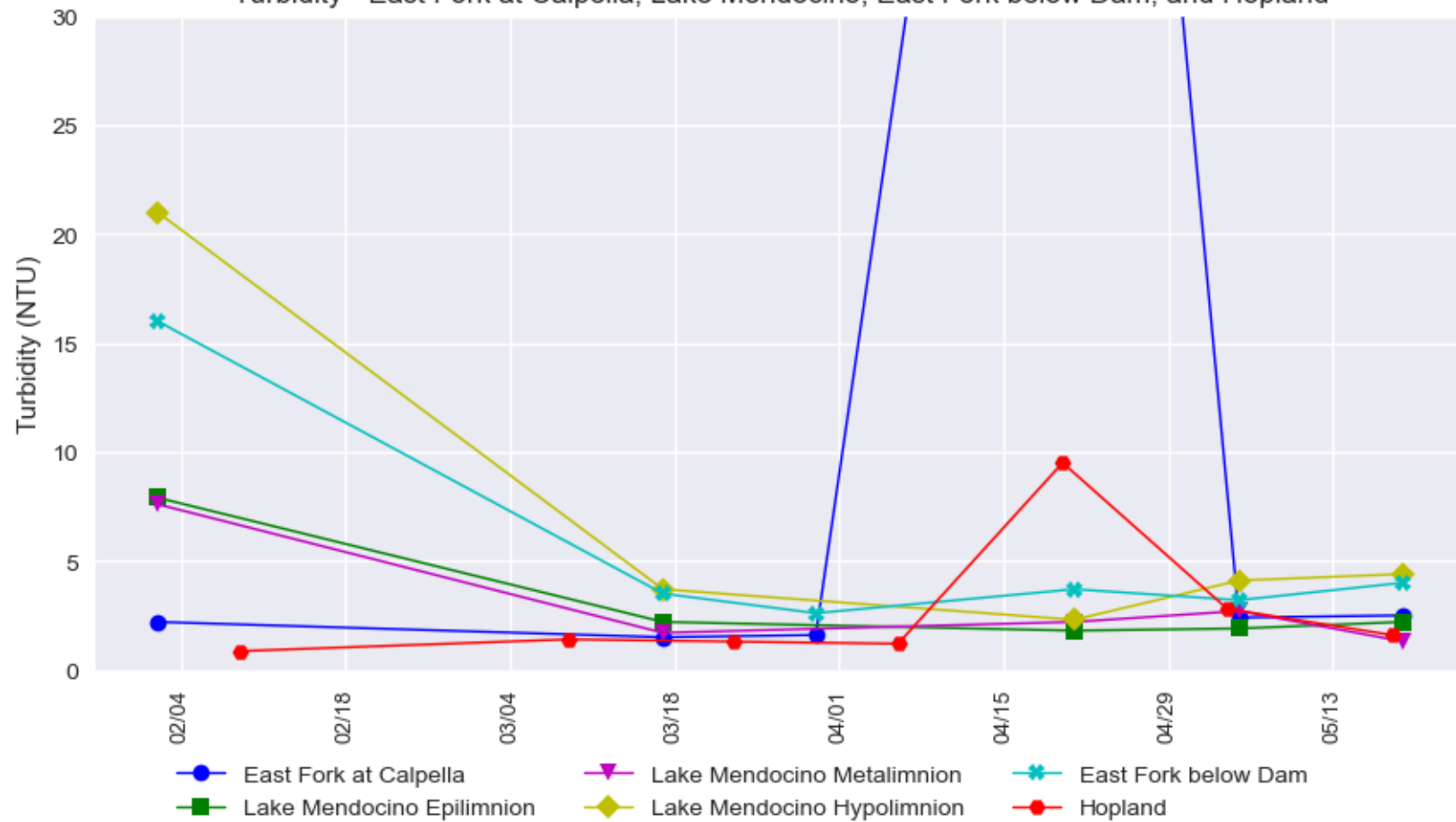
Provisional Data Subject to Revision

Lake Mendocino to Hopland Water Quality

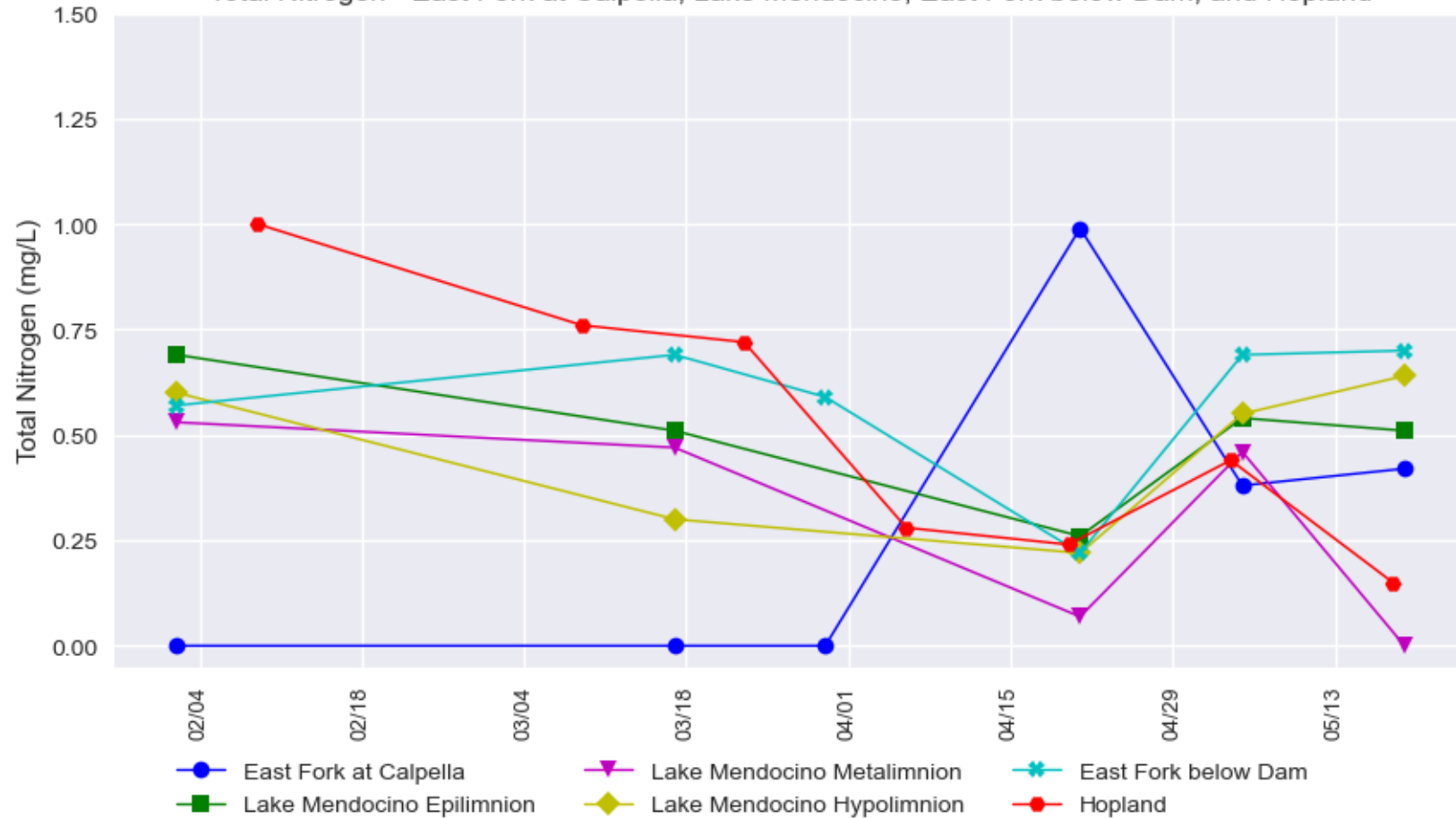
Temperature - East Fork at Calpella, Lake Mendocino, East Fork below Dam, and Hopland



Turbidity - East Fork at Calpella, Lake Mendocino, East Fork below Dam, and Hopland



Total Nitrogen - East Fork at Calpella, Lake Mendocino, East Fork below Dam, and Hopland

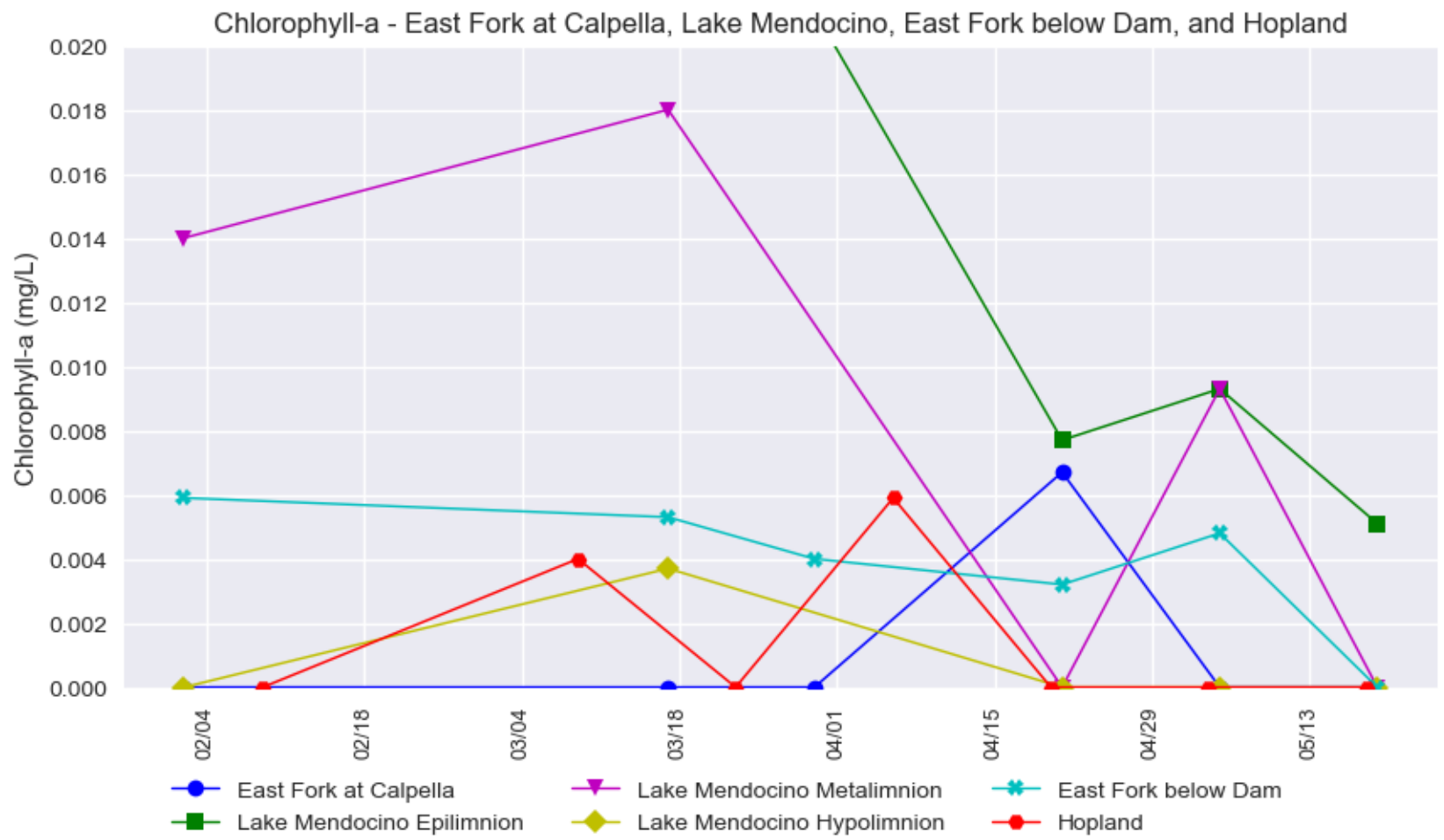
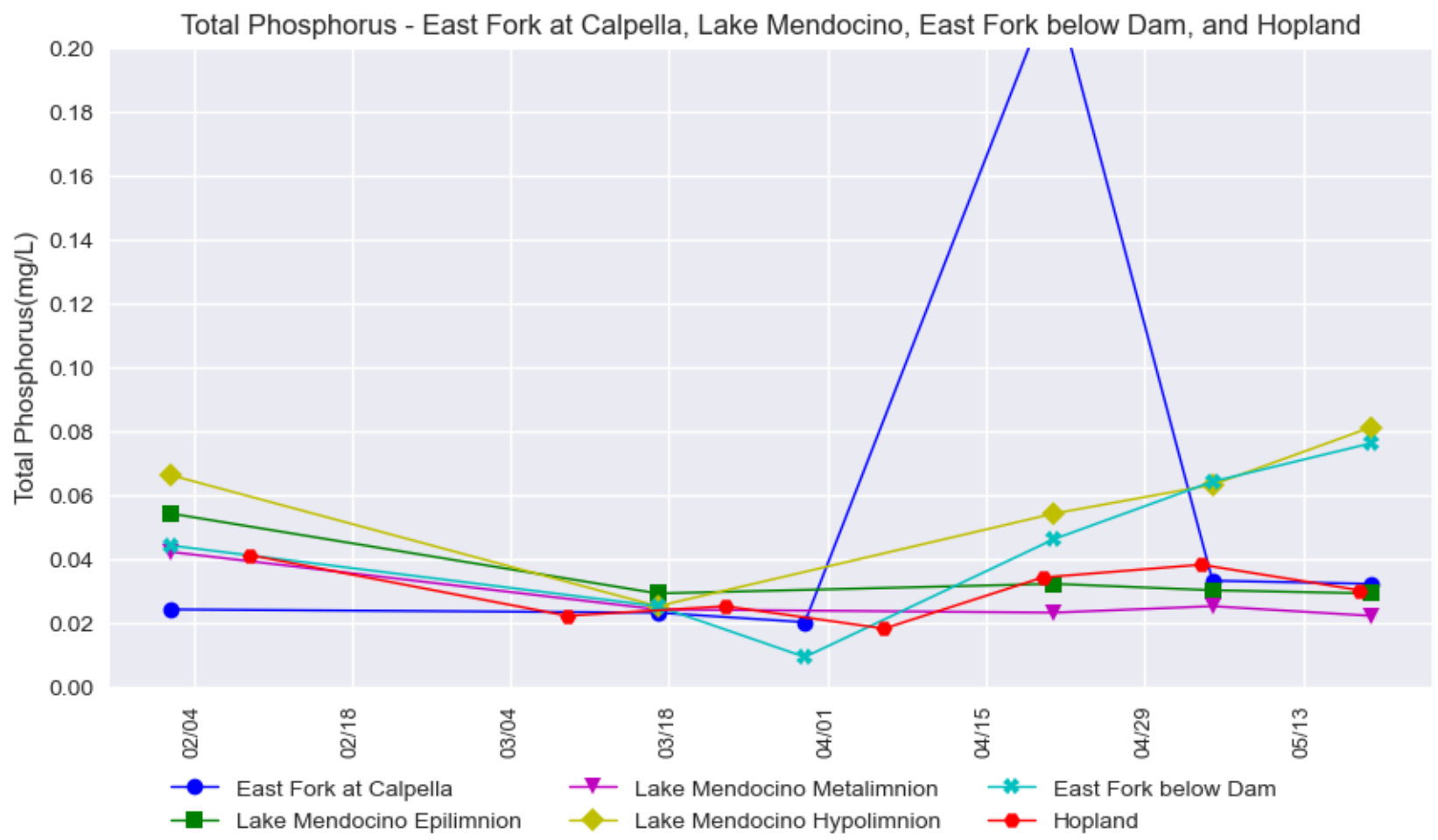


*Each marker in the plot represents a grab sample. The lines are used to help visualize the data, but do not represent a continuous data measurement.

Russian River Water Quality Grab Samples (February 2 - May 19, 2022)

Provisional Data Subject to Revision

Lake Mendocino to Hopland Water Quality



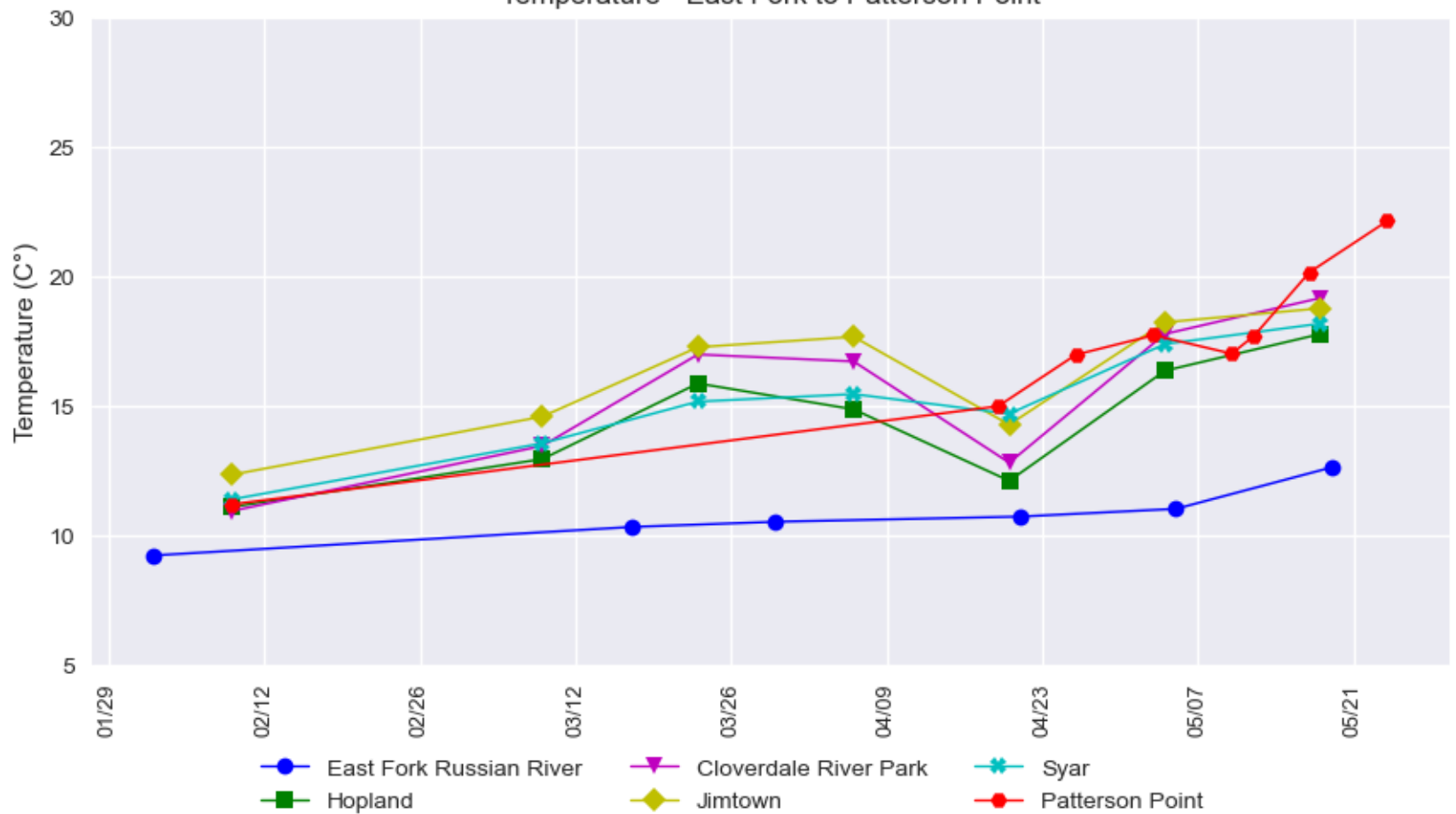
*Each marker in the plot represents a grab sample. The lines are used to help visualize the data, but do not represent a continuous data measurement.

Russian River Water Quality Grab Samples (February 2 - May 19, 2022)

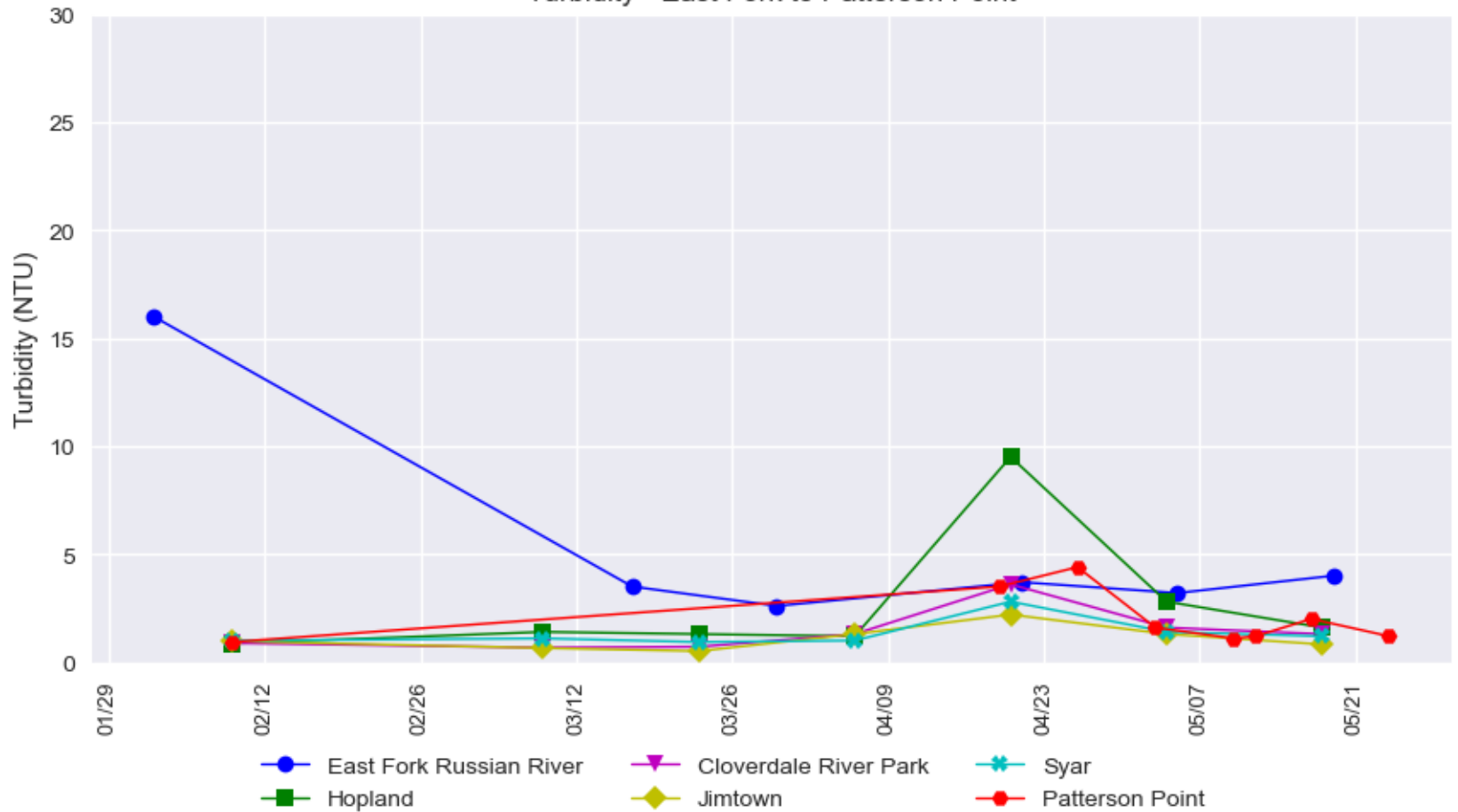
Provisional Data Subject to Revision

East Fork (below Lake Mendocino) to Patterson Point Water Quality

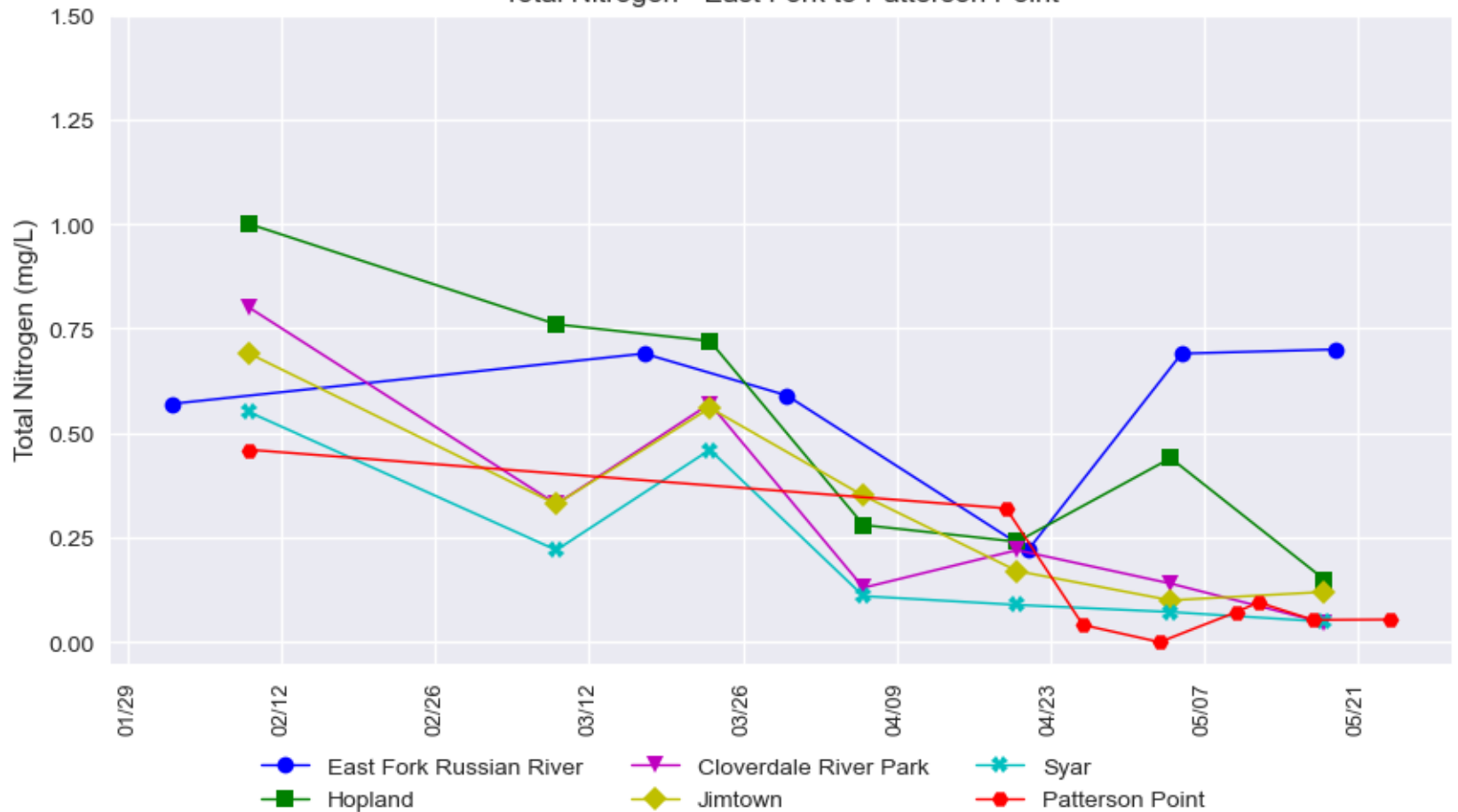
Temperature - East Fork to Patterson Point



Turbidity - East Fork to Patterson Point



Total Nitrogen - East Fork to Patterson Point



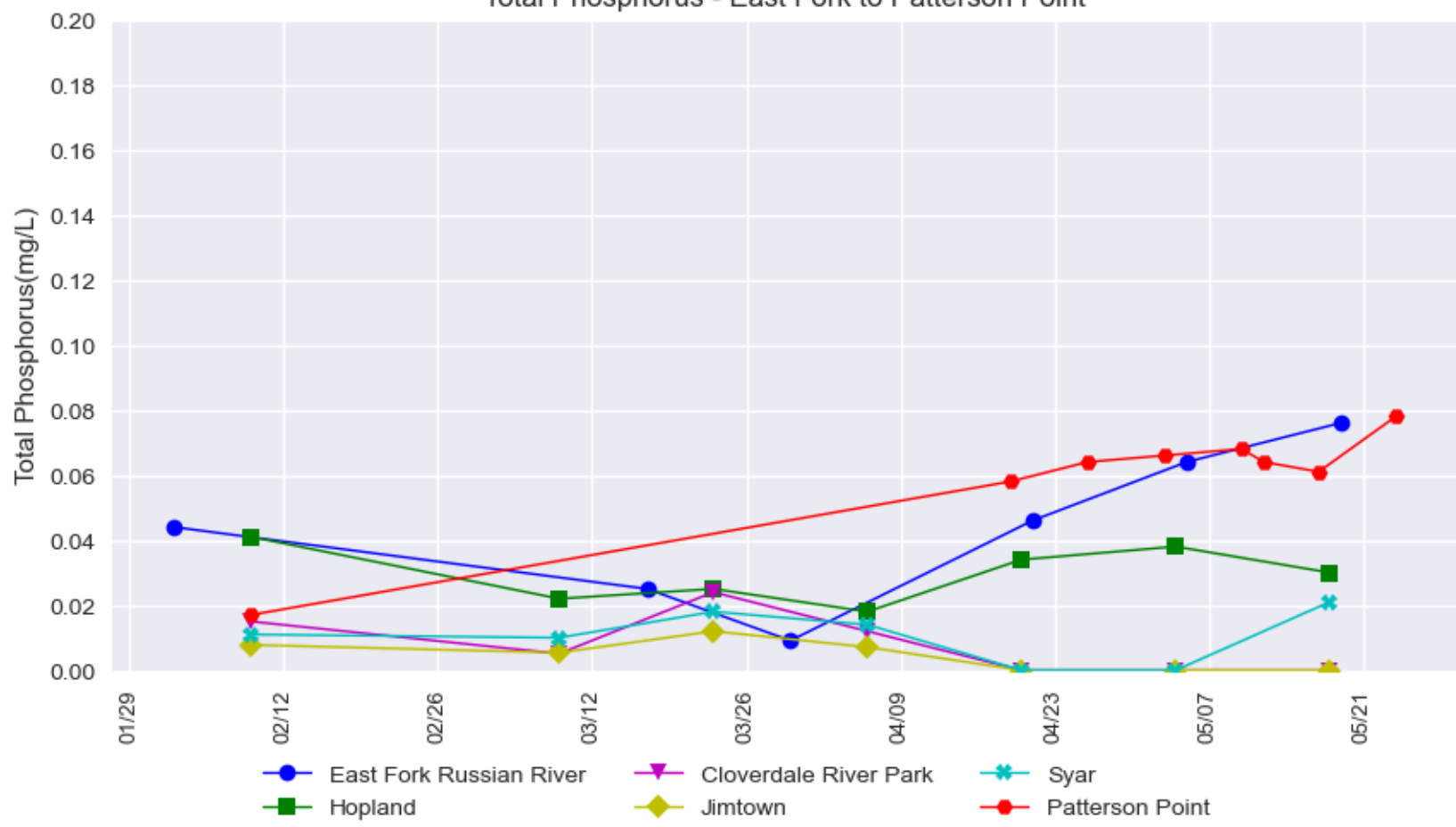
*Each marker in the plot represents a grab sample. The lines are used to help visualize the data, but do not represent a continuous data measurement.

Russian River Water Quality Grab Samples (February 2 - May 19, 2022)

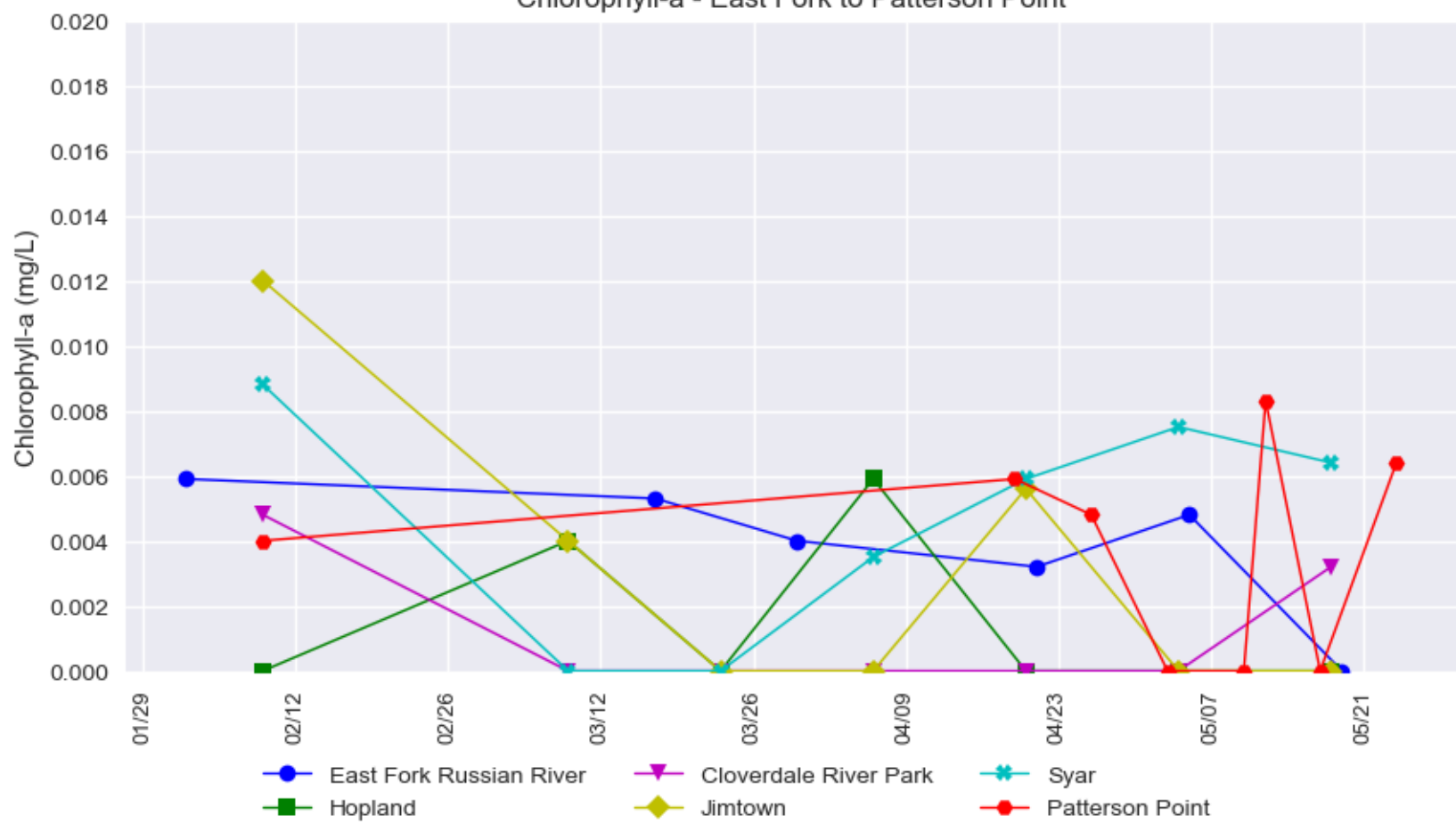
Provisional Data Subject to Revision

East Fork (below Lake Mendocino) to Syar Water Quality

Total Phosphorus - East Fork to Patterson Point



Chlorophyll-a - East Fork to Patterson Point



*Each marker in the plot represents a grab sample. The lines are used to help visualize the data, but do not represent a continuous data measurement.